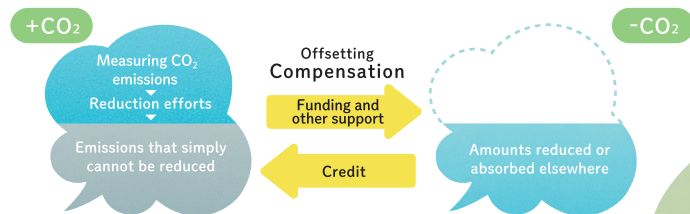


Our sustainability efforts

Carbon Offset

What is carbon offsetting?

Carbon offsetting is the practice of compensating some or all of one's own greenhouse gas emissions, such as CO₂, which for whatever reason cannot be reduced, through investments in activities to reduce emissions elsewhere. In the case of incentive groups or conferences, the main target is the CO₂ emitted from transportation, accommodation, and meals of participants and operators, as well as the CO₂ emitted from the use of energy at the venue.



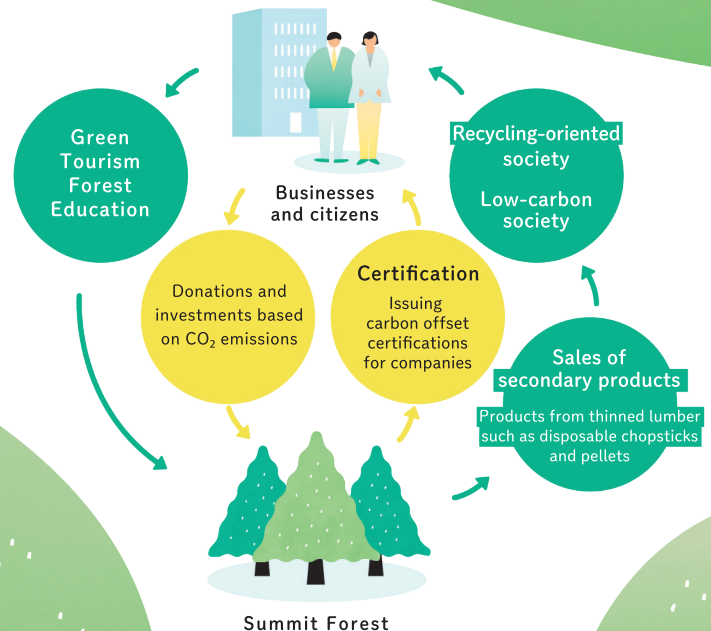
Source: Carbon Offset Forum (Ministry of the Environment)

Summit Forest

The Hokkaido Toyako G8 Summit held in Hokkaido in 2008, also known as the Environmental Summit, resulted in a variety of locally-initiated environmental initiatives. One of these initiatives is the "Bihoro Corporate Forestation" project, a participation-type forestation initiative orchestrated by the town of Bihoro. The "Summit Forest" was born as a forest created by the NPO Sapporo Convention Network. The activities have been ongoing ever since.



Summit Forest Circular Society Model



About the Bihoro Forestation Project

FSC-certified forest https://jp.fsc.org/jp-ja/Bihoro_Town

FSC certification is the world's highest standard for the certification of appropriate forest management. In Bihoro Town, FSC certification is integrated into the local economy through the manufacture of houses and products using certified lumber, contributing to regional development while balancing the conservation and sustainable use of the forests.



History of the NPO Sapporo Convention Network

Current name: Meetings & Events Sapporo-Hokkaido (MESH)

(2008~2022)

Total number of applications / organizations



105

organizations

Number of trees planted



Approx. 116,000 trees (about 60 ha)

Amount of CO₂ absorbed

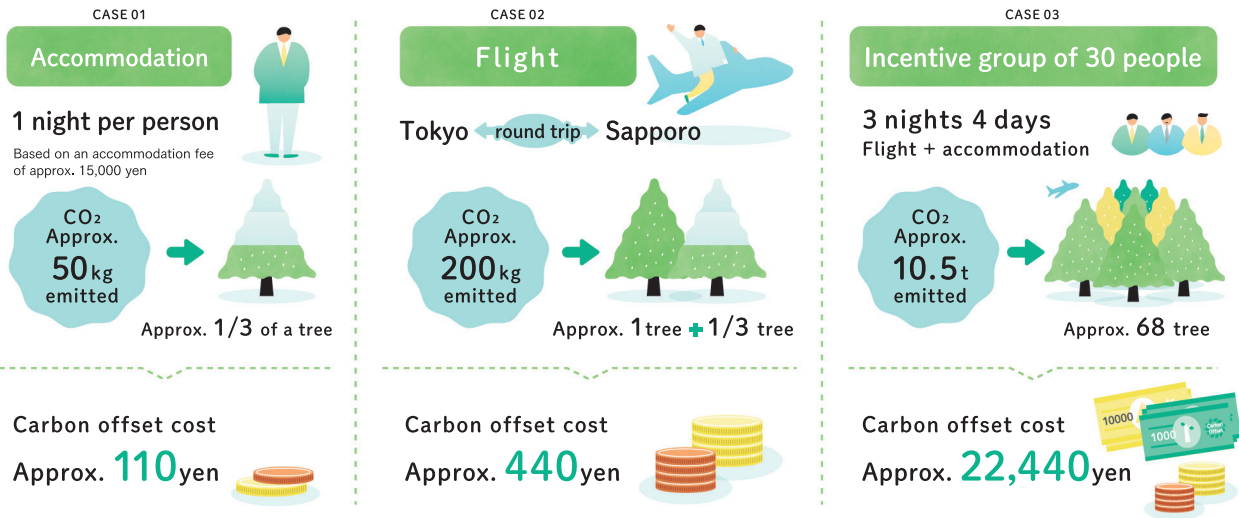


Approx. 15,150t -CO₂



Carbon offset mechanism

Calculating carbon emissions and offsets



Summit Forest carbon offset mechanism



Amount absorbed by one larch tree
approx. 155kg -CO₂

Approx. 2,000 trees per 1 ha

Bihoro Town	20-year management
Amount of CO ₂ absorbed	Approx. 311t-CO ₂
Fee	660,000yen

Cost per larch tree at Summit Forest

Carbon offset cost

Forest management, such as tree planting and thinning

75%

Administ-rative costs

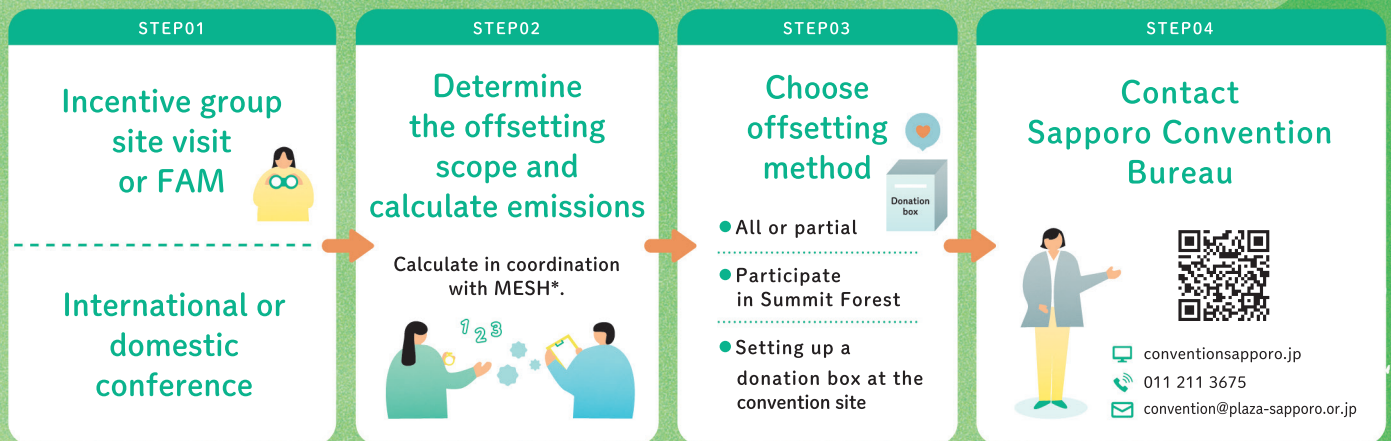
25%



Per larch tree
330yen

*The cost of carbon offsetting differs from emission credits, etc., in that the cost is calculated based on what is being done. *It does not correspond to the Kyoto Protocol, which counts CO₂ in Japan.
*There are currently no plans to certify the J-credit.

How to offset carbon via Summit Forest?



*MESH: Meetings & Events Sapporo-Hokkaido Name changed from NPO Sapporo Convention Network in 2022



SAPPORO CONVENTION BUREAU

